



Letter from Director

For returning students, welcome back to UT Austin! We hope you had a relaxing winter break! Welcome as well to those of you who are new to campus and to SSD. We hope you find the 16th edition of our newsletter, the *Insider*, useful and informative.

In this newsletter you will discover: important dates and deadlines, a spotlight on our new outreach initiative, the disABILITY Advocate Program, updates on procedures for testing at SSD, and more!

Once again, welcome back and best wishes for a successful semester!

Stephani Wolfe, LCSW

Executive Director

SSD Student Forums

SSD will host two student forums during the spring 2012 semester. These forums allow students to directly connect with those responsible for accommodating students and keeping the university in compliance with the Americans with Disabilities Act. This is an opportunity for students to ask questions, share ideas, and provide constructive criticisms to those organizational bodies designed to accommodate students with disabilities.

The student forums will take place in the SSD office (SSB 4.206):

Tuesday, February 7th from 6:00 – 7:00 p.m.

Wednesday, February 15th from 6:00 – 7:00 p.m.

Pizza will be provided. Come join us for some dinner and discussion.

Inside this issue:	
Scholarships	2
SSD Testing Policy	2
disAbility Advocate	3
Deaf / HH Resources	3
Time Management Workshops	4
Important Dates	4

SPRING 2012 Walk-In Schedule

Hours 9am-4pm:

MONDAYS:
Emily Shryock

TUESDAYS:
Lauren Kinast

WEDNESDAYS:
Justin Rogers

THURSDAYS:
Kelli Bradley

FRIDAYS:
Rotates among SSD Staff

Scholarships

Lois Ford LaBauve Scholarship

This scholarship is given in memory of Lois Ford La Bauve and in honor of Ms. La Bauve's daughter, Louise Saxon. Ms. La Bauve was a Texas school-teacher for many years and always displayed a passion for learning.

From 1961-1972 La Bauve was the Director of Services for the Blind and Disabled at the Texas State Library. During her tenure with the library system, La Bauve founded the Texas Talking Book program. In later life, La Bauve lost most of her sight and thus had personal experience with visual disabilities. In 2002, when La Bauve created the endowment, Louise Saxon, La Bauve's daughter said, "My mother would like for the endowment to help educate more people who overcome visual disabilities and exhibit real potential for making a difference in the world."

At least one scholarship for a minimum of \$500 will be awarded in 2012. If funding is available, additional scholarships and/or scholarships of a larger monetary value will be awarded. Further information about scholarship qualifications and applications for the Lois Ford La Bauve and Louise Saxon Endowed Scholarship will be sent out during the spring semester.

Carole L. Patterson Endowed Scholarship

The Carole L. Patterson Endowed Scholarship is awarded to a limited number of qualified students registered at The University of Texas at Austin. This scholarship is intended for physically disabled students enrolled in at least six hours at UT Austin, with preference given to mobility impaired students. Applicants must have at least a 2.5 UT GPA. Financial need may be used to distinguish among applicants. For

more information visit: <http://www.texasscholarships.org/types/osfs/patterson.html>

Will Rogers Memorial Scholarship

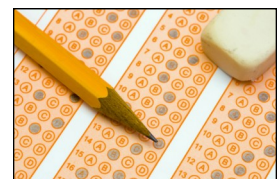
The Will Rogers Memorial Scholarship is awarded to a limited number of qualified students registered at The University of Texas at Austin. This scholarship is intended for disabled students or non-disabled students studying to work with disabled individuals, especially disabled children. "Disabled" in this context shall refer to students who have a physical or non-physical disability, including mental hardships and obstacles caused by the environment and lack of opportunity. Financial need may be used to distinguish among applicants. For more information visit: <http://www.texasscholarships.org/types/osfs/rogers.html>

SSD Testing Policy Changes

SSD offers testing space for students who require specialized software or assistance in order to complete an exam. Sometimes, professors are unable to provide space to accommodate other students who get testing accommodations and we will try to provide space for those students.

The current change to our policy is that any exam at SSD must be completely coordinated a minimum of 10 business days before the exam is to occur. Complete and submit the SSD Test Request Form at least 10 business days prior to the exam. That form can be found in the SSD office or on our SSD website.

If you're not sure about a testing related issue, feel free to contact Craig High at: cehigh@austin.utexas.edu.



Introducing the disABILITY Advocate Program

In October, SSD launched a new program designed to promote knowledge, advocacy, and understanding about disabilities across campus. The disABILITY Advocate Program is an interactive presentation that includes information relating to types and prevalence of disabilities, language sensitivity, and tips on interacting with people with disabilities (assume competence, not disability). The goal of the program is to create partners across campus who are ready, willing, and able to be advocates for people with disabilities. Although the program is new, SSD has already provided training to groups from the DDCE Senior Staff, Admissions, Career Services in various colleges, RecSports, the Counseling and Mental Health Center, Student Emergency Services, and Student Judicial Services. Participants who complete the training are given a disABILITY placard and are encouraged to display them in their offices. We are excited to report that UT currently has 158 placards across campus. Hopefully we will soon be seeing more placards all over campus as we gain more partners in helping UT become more accessible and inclusive for people with disabilities.

The disABILITY Advocate Program has three versions, tailored specifically to different audiences. The two-hour Foundation Program is designed for students, faculty, and staff who want an in depth session with a chance for discussion and dialogue. The disABILITY Advocate 101 presentation is a "crash course" designed for classrooms and meetings where time is limited. The disABILITY Advocate Faculty program contains a special component for faculty that discusses different aspects of providing accommodations in the classroom. All the disABILITY Advocate programs are available by request through the SSD office.

If, as a student, you are interested in getting involved with this new initiative, we encourage you to get involved with the disABILITY Advocate Student Coalition. This group aims to engage students in different activities regarding disability awareness on campus. Because this group is newly formed, we need your ideas, suggestions, and involvement to make it a success. Please contact emily.s@austin.utexas.edu if you want to get involved or want more information.

The purpose of the disABILITY Advocate program is to promote disability awareness and sensitivity to create a more inclusive environment for people with disabilities at the University of Texas at Austin.

We look forward to having you join us in this effort!

Deaf / Hard of Hearing Resources at UT

Students with a hearing loss, whether moderate to profound, often ask us how they can connect with others who are looking for others who can relate to their experiences, find out what resources and/or opportunities there are for the Deaf/HH student population, or simply wanting to get together and hang out. Here are some ways to can get connected:

There is a FaceBook page that was

created by current UT Deaf/HH students, open to anyone who is Deaf, Hard of Hearing and wants to be a part of the culture, sign language skills not required! You can find this under: **SignHorns** or at this url address: <http://www.facebook.com/groups/257174520983240/>



The SSD office has also created a ListServ for Deaf/HH/Community members to sign up for. This ListServ allows for the exchange of any event announcements, get together, research projects related to Deaf/HH, or posting community information. To sign up for this ListServ, go to this url: <https://utlists.utexas.edu/sympa/info/utdeafandhh> and click on Subscribe.

Important Dates / Deadlines for Spring 2012

February 17	Friday Second tuition payment due for students who selected the three-payment plan.
March 12-17	Monday–Saturday Spring break.
March 23	Friday Final tuition payment due for students who selected the three-payment plan.
April 2	Monday Last day an undergraduate student may, with the dean’s approval, withdraw from the University or drop a class except for urgent and substantiated, nonacademic reasons. Last day a student may change registration in a class to or from the pass/fail or credit/no credit basis.
April 11-13, 16-20	Wednesday–Friday, Monday–Friday Academic advising for continuing and readmitted students for the summer session and the fall semester.
April 16	Priority Registration.
April 16-27	Daily Registration for the summer session and the fall semester for continuing & readmitted students.
April 20	FINAL DEADLINE for Course Load Reductions. Requests made after the established University deadlines for dropping a course will be accepted only under extreme circumstances (i.e. hospitalization, significant change in status, etc.)
April 30	Monday Last class day in the School of Law.
May 2-5, 7-12, 14-15	Wednesday–Saturday, Monday–Saturday, Monday–Tuesday Spring semester final exams in the School of Law.
May 4	FINAL DEADLINE for Medical Withdrawals.
May 4	Friday Last class day except in the School of Law. Last day to submit master’s report, recital, thesis, doctoral dissertation, or treatise to the graduate dean. Last day a graduate student may, with the required approvals, drop a class or withdraw from the University.
May 7-8, 13	Monday–Tuesday, Sunday No-class days.
May 9-12, 14-15	Wednesday–Saturday, Monday–Tuesday Spring semester final examinations except in the School of Law.
May 18-19	Friday–Saturday Graduation ceremonies in the colleges and schools.
May 18	Friday Commissioning of ROTC graduates.
May 19	Saturday Commencement (official graduation date).

Time Management Workshops

Wednesday, February 8th, 2012 3:30–5:00PM SSB 4.212

Tuesday, February 21st, 2012 3:30–5:00PM SSB 4.212

Services for Students with
Disabilities, SSB 4.104

100 W. Dean Keeton St.
Austin, TX 78712-0175

Phone: 512.471.6259

FAX: 512.475.7730

VP: 866.329.3986

<http://www.utexas.edu/diversity/ddce/ssd/>